

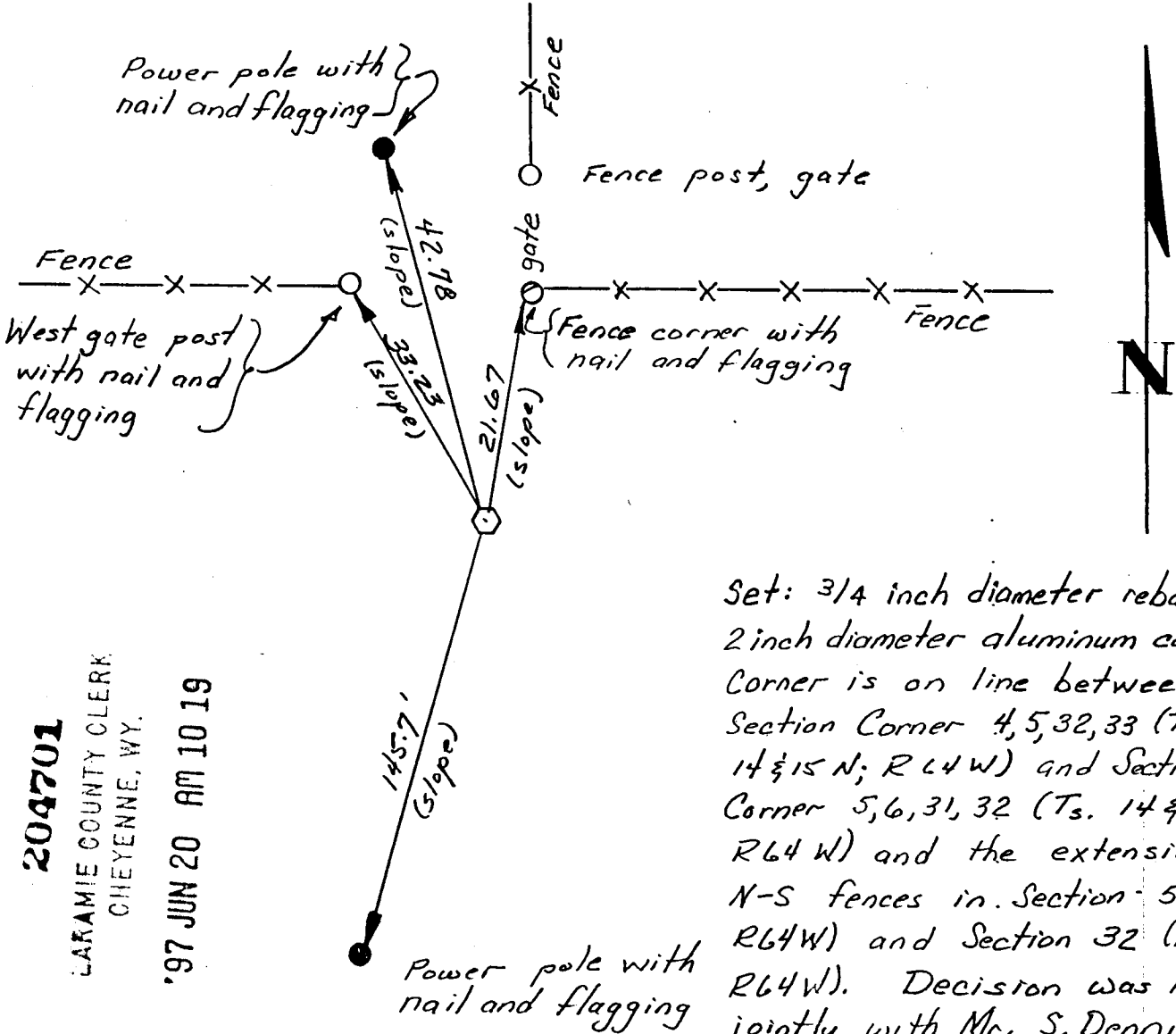
# State of Wyoming Corner Record

(In compliance with the CORNER PERPETUATION AND FILING ACT, Wyoming Statutes, 1977, Section 36-11-101, et. seq., and the Rules and Regulations of the Board of Registration for Professional Engineers and Professional Land Surveyors.)

Reverse side of this form may be used if more space is needed.

Record of original survey and citation of source of historical information (if corner is lost or obliterated). Description of corner monumentation evidence found and/or monument and accessories established to perpetuate the location of this corner. Sketch of relative location of monument, accessories, and reference points with course and distance to adjacent corner(s) (if determined in this survey). Method and rationale for reestablishment of lost or obliterated corner.

1/4 Section Corner: Sec. 5; T 14 N; R 64 W; 6th P.M. and  
Sec. 32, T 15 N; R 64 W; 6th P.M.



Set: 3/4 inch diameter rebar with 2 inch diameter aluminum cap. Corner is on line between Section Corner 4, 5, 32, 33 (Ts. 14 & 15 N; R 64 W) and Section Corner 5, 6, 31, 32 (Ts. 14 & 15 N; R 64 W) and the extension of N-S fences in Section 5 (T 14 N; R 64 W) and Section 32 (T 15 N; R 64 W). Decision was made jointly with Mr. S. Dennis Dawson, PLS 555).

204701  
 LARAMIE COUNTY CLERK  
 CHEYENNE, WY.  
 '97 JUN 20 AM 10 19

Date of Field Work: 20 April 1997 Office Reference: \_\_\_\_\_

### CROSS INDEX DIAGRAM

	1	2	3	4	5	6	7	8	9	10	11	12	13	14	15	16	17	18	19	20	21	22	23	24	25
A																									
B																									
C																									
D																									
E																									
F																									
G																									
H																									
I																									
J																									
K																									
L																									
M																									
N																									
O																									
P																									
Q																									
R																									
S																									
T																									
U																									
V																									
W																									
X																									
Y																									
Z																									

Firm/Agency, Address

This corner record was prepared by me or under my direction and supervision.

PREPARED BY:

SEAL & SIGNATURE

Dr. Herbert W. Stoughton  
 Geodetic Engineer  
 2821 Carey Avenue  
 Cheyenne, Wyoming 82001  
 (307) 632-7460

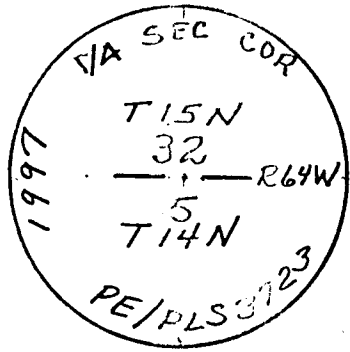
Herbert W. Stoughton

20 June 1997

32 15N

Corner Name: Not Applicable Section: 5 T 14N R 64W 6th P.M. Cross-Index No.: A-7

SRP/PLS/PLSN: March 1994 (CLCR\_SJA)



stamping